

How do I apply the Digital Report CHEW?

The recognition of a limited ability to break down certain food components is difficult for the affected patients. Even during consultations, although supported by illustrative material, a deepened comprehension can often not be generated. It is only by using Digital Report CHEW, which visualizes and verbalizes the individual chewing efficiency, that the patient is able to build up the required understanding for necessary restorative build prosthetic measures. This process is additionally supported by the comparison with individualized standard values the Digital Reports are based on. It is a matter of course that the information from the Digital Report CHEW provides essential support for your correspondence and documentation.

What do I use the Digital Report BRUX for?

There is hardly anything more annoying than the fracture of a restoration that has been incorporated only recently. In addition to the accumulated extra work, there is an unsettled and irritated patient. On the other hand, if the individual bruxing of the patient is depicted and clearly communicated prior to the treatment, planning and implementation of appropriate measures to minimize the risk are possible. And the patient will accept these necessary procedures.

How does the Digital Report CEPH help me in my day-to-day work?

Oral rehabilitations are complex and require numerous decisions from the practitioner team. It is a challenge to coordinate different opinions, to settle contradictions and to pool the joint efforts. Objective data, based on scientific standards, help with decisions such as the correct vertical dimension (bite height). The cephalometric as a basis for the Digital Report CEPH delivers these data in comprehensible graphically, tabulary and verbally displayed form, supplemented by instructions on how the resulting changes can be implemented by the patient successfully.

Which benefit arises if I choose Digital Reports CONDY?

The benefit of the records of temporomandibular joint movement is often detected solely in the context of jaw joint problems. By contrast, the targeted use of this data for the design of the occlusion is the key to success in oral rehabilitation. The functional determinants of the occlusion are presented based on the data created in practice in the Digital Report CONDY. Therapeutic decisions can be made and communicated comprehensibly and based on scientific norms.

Do you have questions or need further information?

Visit our homepage at www.orehab-minds.com or arrange a free consultation.

☎ +49 (0) 7307 24922-40 ✉ info@orehab-minds.com

We look forward to your request.



Take advantage of our expertise!

Oral rehabilitation has never been so easy. Find out at www.orehab-minds.com how you can **immediately and sustainably** benefit from our Digital Services.



000811GB-20190228





You provide your data



Your data are processed



The report template is created for you



You generate the digital reports for your dental clinic

What are digital reports?

Just imagine the Digital Reports as a kind of translation of diagnostic findings you have collected in your dental clinic. Translations that help you with documentation and correspondence save a lot of time. Translations that also help your patients to follow your explanations. And finally, Digital Reports contain information you can resort to in your daily dental work.

How can you use Digital Reporting Services in your practice?

Digital Reporting Services are easy, fast and secure to use. A change in the organization of your dental clinic is not necessary. The Digital Report provides you with information that, among others, is available for referring to documentation, communication, information and decision-making. Without large investment volumes and without any significant training needs, you can start at any time. You can e.g. offer the standardized bump test in your practice by renting the required equipment. The equipment you need for the standardized shopping function test will be offered by OREHAB MINDS alongside the purchase and also on attractive terms for rent. The evaluations are settled by order, a flat rate can also be agreed upon. The result of the bakeout test is displayed graphically and verbally - in the Digital Report CHEW.

01 Simple

The simple application of the Digital Reporting Services supports the practice team in the smooth integration of this service offer into the day-to-day routine of the practice.

02 Fast

The web portal www.portal.orehab-minds.com is the platform for digital data exchange. The results are available quickly.

03 Safe

All Digital Reports consider scientific facts and are based on databases which allow individual comparisons.

04 Convenient

Documentation and archiving tasks are simplified by the Digital Reports. These are always available and allow professional reasoning at the highest level.

05 Manifold

The Digital Reports do not impose particular treatment concepts on you. Your prosthetic-reconstructive treatments are supported by the multiplicity of Digital Reports in an optimal way.

06 Comprehensible

The Digital Reports provide graphic and verbal elements applicable for all communication tasks in the dental office with patients as well as with other contact persons and colleagues.

07 Convincing

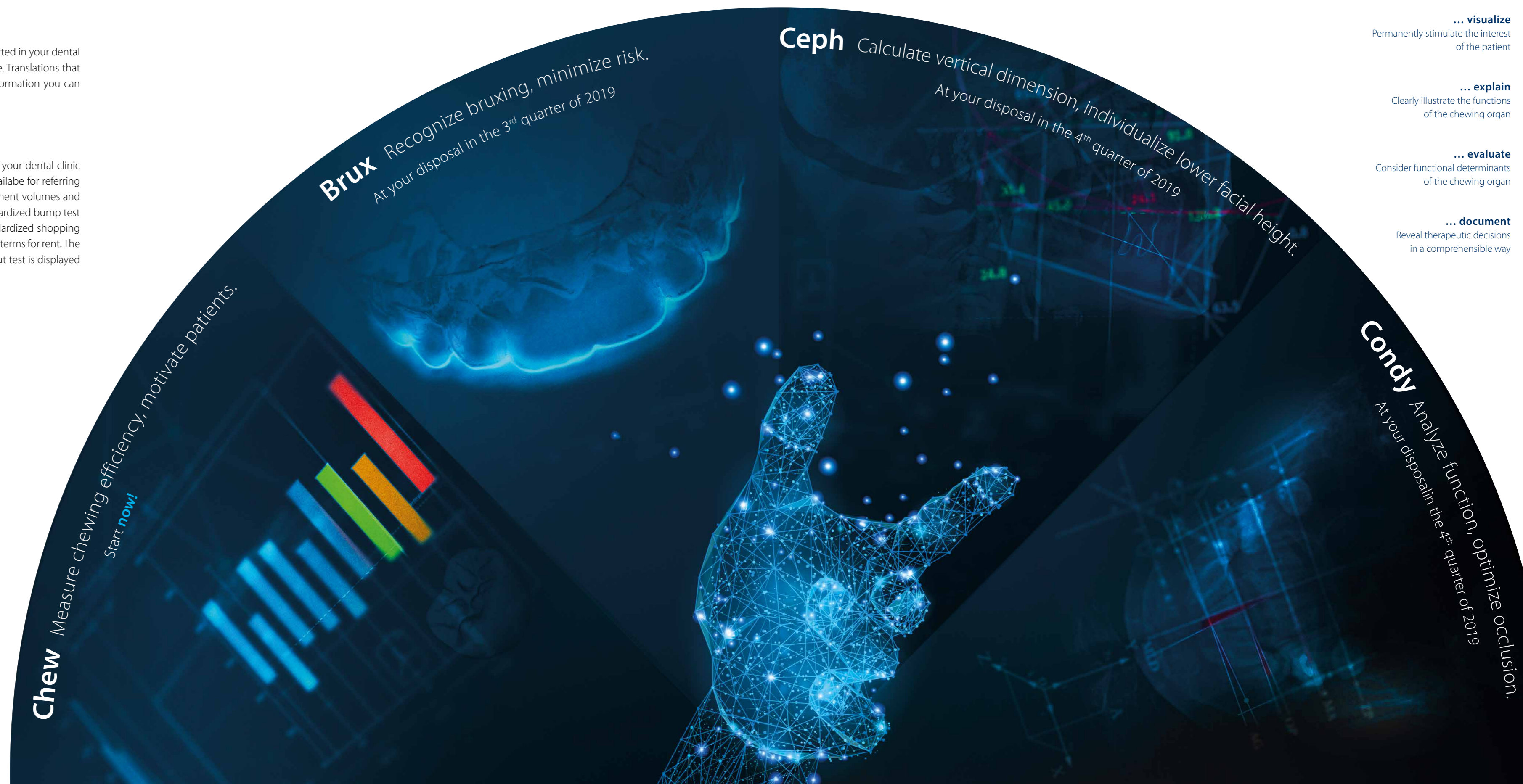
Arguments have more weight if they can be substantiated by the objectifiable facts of the Digital Reports.

08 Motivating

Using the information in the Digital Reports patients recognize the need for treatment and thus accept their treatment suggestions.

09 Supportive

In addition, you can rely on the knowledge in our literature database, which is available in the form of summaries including the corresponding references.



... visualize
Permanently stimulate the interest of the patient

... explain
Clearly illustrate the functions of the chewing organ

... evaluate
Consider functional determinants of the chewing organ

... document
Reveal therapeutic decisions in a comprehensible way